

HOME FOR CHRISTMAS

INTERIOR STYLIST AIMEE TARULLI AND HER BUILDER
HUSBAND FRANK HAVE A STUNNING FAMILY CHRISTMAS
PRESENT – THEIR VERY OWN ‘HOUSE TO HOME BEAUTIFUL’

WORDS JACKIE BRYGEL STYLING AIMEE TARULLI PHOTOGRAPHY ARMELLE HABIB



MOVING IN *Home Beautiful* has been following stylist Aimee and her builder husband Frank as they created their dream home in Melbourne. To celebrate their first Christmas together in their new place, Aimee (pictured with children Rosie and Leo) knew exactly what she wanted. “Each year, I get so excited about doing a new theme and trying out something different,” she says. “Our new home has quite a bit of colour, so I wanted to complement that with lots of rich berry reds and dusty blues.” The chic look complements the easy elegance of a King Living ‘Plaza’ sofa, an ‘Ivy’ marble-topped coffee table from Grazia & Co and a super-sized ‘Aster 2’ floral artwork by Kirra Jamison, at left.

“THE KIDS LOVE TO *help* SO I LIKE TO PLAN AT LEAST ONE *dessert* FOR CHRISTMAS DAY THEY CAN *decorate*” ~ AIMEE



Whether she's setting the table in glorious festive style, or adorning the family's tree with cherished ornaments, each of which tell a story, interior stylist Aimee is in her element come Christmas time. To the mother-of-two, there really is something wonderfully magical about the Yuletide celebrations. “I'm such a huge fan of Christmas,” she says. “I loved it so much as a child, and now I enjoy sharing that enthusiasm and excitement with my own kids.”

Happily for Aimee and her husband Frank, along with their adorable youngsters, son Leo, four, and two-year-old daughter Rosie, this Christmas is set to be among their most memorable. The young family have just moved into their new two-storey home by the bay in Melbourne – in perfect time for all the seasonal festivities. “It really is wonderful to be here for Christmas,” says Aimee. “We can't wait to have family over on the day.”

During the past six months, *Home Beautiful* has followed the personal home journey of Archer Interiors stylist Aimee and builder Frank, who runs building company Thomas Archer Homes with business partner Matt Daly. Now the home is ready to be unveiled, the couple are brimming with excitement. “It's been amazing watching the house built from the ground up, and we couldn't be happier with the way it has turned out,” says Aimee.

Bathed in beautiful light, with soaring ceilings and super-chic finishes and furnishings that are not only luxe, but also focus on family practicality, Aimee and Frank's home truly shines. >



KITCHEN A considered mix of contrasting tones and textures defines Aimee and Frank's design-savvy kitchen. Richly veined Super White Premium marble, from WK Quantum Quartz, makes the island a show stopper. Extending from one end is a built-in table in durable Navurban New Age Veneer in Balmoral, while black Viccarbe 'Last Minute' stools by Spanish design queen Patricia Urquiola, found at Hub Furniture, are a chic choice. Lining the workbench and splashback beyond is Costa Concreto Six+, also from WK Quantum Quartz, deemed a winner for its low-maintenance appeal. “The back bench is my prep area, so I was very particular about having a hardy material,” says Aimee.



LOUNGE The family room is positively sparkling with festive glow, and little Rosie makes the sweetest Santa's helper. The pretty 'Mia' armchair from Hub ties in a treat with the blush tones in the Barbara Kitallides painting, along with that eye-catching marble coffee table. “The pink chair was a bit of a splurge, but I really wanted a statement piece near the fireplace – and it's super comfy,” says Aimee. And her top Christmas tree decorating tip? “Less is more,” she says. “It's all about a selection of beautiful ornaments and fairy lights. Why not show off the tree as well?”



A spacious entry with a sunken lounge to one side leads directly into the living space, kitchen and an alfresco zone framed by greenery. A teal-tinged pool wraps invitingly around the side of the home, while vivid large-scale works by the couple's favourite artists infuse the home with further life and colour.

Upstairs, connected by a central chill-out space, are Aimee and Frank's suite at one end, and the children's rooms and guest suite at the other. "I went for quite a minimal aesthetic throughout, with lots of greys and strong elements of black," explains Aimee. "I really wanted a home that felt very architectural – modern and contemporary – because that's the style we like. But it also needed to feel warm and welcoming."

For Aimee, working on the home has been a joy, although perhaps more challenging than the seasoned stylist had initially anticipated. "It's a lot harder doing your own home – it's much easier to make decisions for other people," she explains. "But it's been incredibly satisfying seeing it all come to life, and we feel it really does reflect our style, as well as us as a family."

With many of the trimmings already in place for Christmas, this new build already feels like a home. "I love hosting all the family and doing an Australian take on the traditional Christmas lunch," says Aimee. There's just one slight concern for little Leo and Rosie. "Coming from a much smaller place, they're worried Santa won't be able to find them in this house," reveals their mum. "But I've assured them that won't be the case!"

KITCHEN The kitchen (right) is a sea of fluted 2-pac cabinetry in misty Dulux Silkworth, with cutting-edge Blum Servo Drive drawer fittings keeping clutter at bay. Aimee and Frank opted for satiny Phoenix tapware in Onyx from the Vivid Slimline range, which was carried through to the bathrooms for a unified look. A pair of Schweigen pyrolytic ovens, along with a 'Silent' undermount rangehood, an induction cooktop and a microwave combination oven – all from Schweigen's state-of-the-art IN range – shoulder the hard work at the business end of the kitchen.



DINING Overlooking the pool, the light-filled dining space (above left) is sure to be a hit at this year's Christmas celebrations. Aimee prepares the marble-topped 'Keel' table from King Living (also above right) with festive decorations from Designstuff. Always on the lookout for eye-catching design, the stylist selected 'Husk' upholstered chairs from Zuster, and a striking 'TossB Sphere 7' pendant from Hub for the area. Cascading sheer curtains from Lynch's Window Fashions, motorised by Somfy, lend a pretty softness to the expansive area.

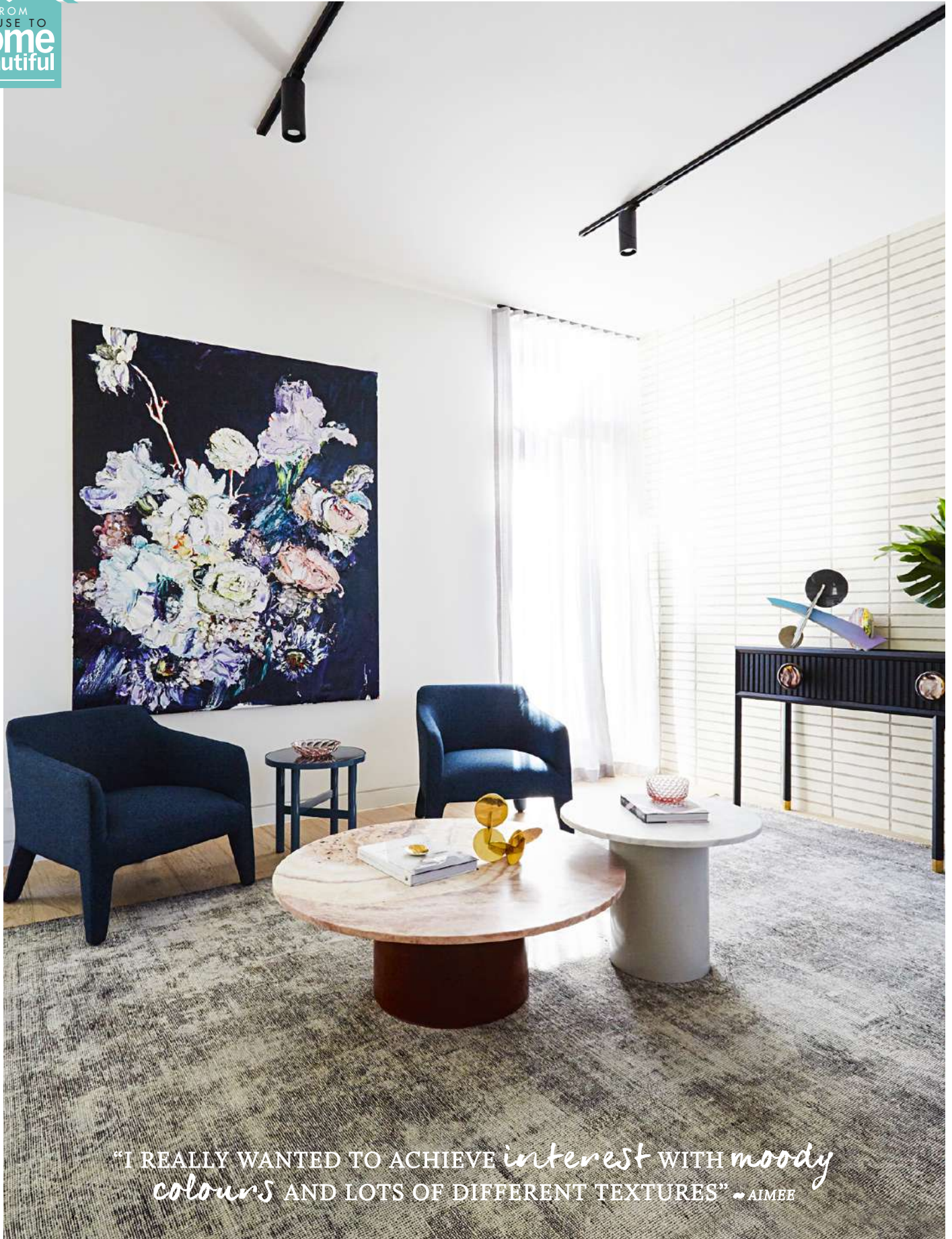


CAKE AND FOOD: THE OWL & THE BAKER. FLOWERS: KATE HILL FLOWERS. CROCKERY: PROVINCIAL HOME LIVING. COUNTRY ROAD



"THIS *feels* LIKE IT WILL
BE A VERY HAPPY *place*
FOR US ALL" ~ AIMEE

EXTERIOR Stone pavers trace an enticing path to the north-facing pool, already deemed one of the family's favourite outdoor attractions. "Everyone's bringing their bathers on Christmas Day – they're all looking forward to their first swim here," says Aimee. CSR Hebel PowerPanels, coated in Dulux Dieskau, were chosen for the exterior of the home. >



LOUNGE Aimee knew she had to have this stunning 'Cosmic Wonderlust' artwork by Craig Waddell as soon as she saw it. "I must have been a florist in a past life, as I'm just drawn to anything with flowers," she says. "This is a really special piece." Grounded by a vintage rug from Halcyon Lake, and showcasing a pair of navy 'Kelly' armchairs from Jordan and custom-made marble coffee tables from BBY Design, the front living room lets colour and texture do all the talking. A black 'Axis' track light from Lights Lights Lights and an Austral Bricks La Paloma feature wall complete the elegant picture. >



“WE HAVE TWO LITTLE KIDS WHO DON’T CARE ABOUT *finishes*, SO I HAVE TRIED TO BE PRACTICAL IN MOST OF MY *choices*” ~ AIMEE

STAIRS Every fixture and feature in Aimee and Frank’s home was carefully considered, including the graceful staircase (above) that features a steel-cut stringer powder-coated in black, and American oak treads stained to match the floorboards. “We spent a lot of time getting the detail on this stair right,” says Frank. Aimee found the ideal place for one of her favourite pieces, the Jordan ‘Kelly’ ottoman in verdant Aquamarine, right underneath.

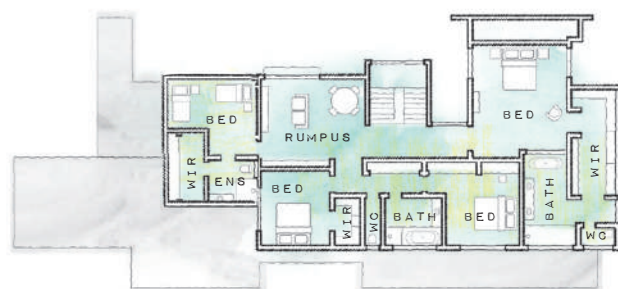
STUDY It may be the home office, but there’s nothing dull about this contemporary workspace (right). Custom joinery is teamed with a pair of velvet King Living ‘Crescent’ ottomans and a ‘Felix’ studio sofa bed, also from King Living. “I think the mix of colours work together well here,” says Aimee. “I always try to go with an earthy tonal palette and then add one strong pop of colour, such as this emerald ottoman.” The artwork by Lottie Consalvo was found at NKN Gallery. >

FLOOR PLAN

GROUND FLOOR



FIRST FLOOR



WE LOVE... *finishes on show*

Almost completely open to the bedroom, Aimee and Frank's hotel-like bathroom is what ensuite dreams are made of. The freestanding Caroma 'Contura' bath, teamed with a Phoenix floor-mounted bath mixer, is the outstanding centrepiece. "Bathroom finishes are so beautiful now, so why would you want to hide them behind a wall?" says Aimee. Visit phoenixtapware.com.au.



"NATURAL LIGHT IS VERY *important* TO US. A SPACE
flooded IN LIGHT IS AN INSTANT *mood* LIFTER" ~ AIMEE

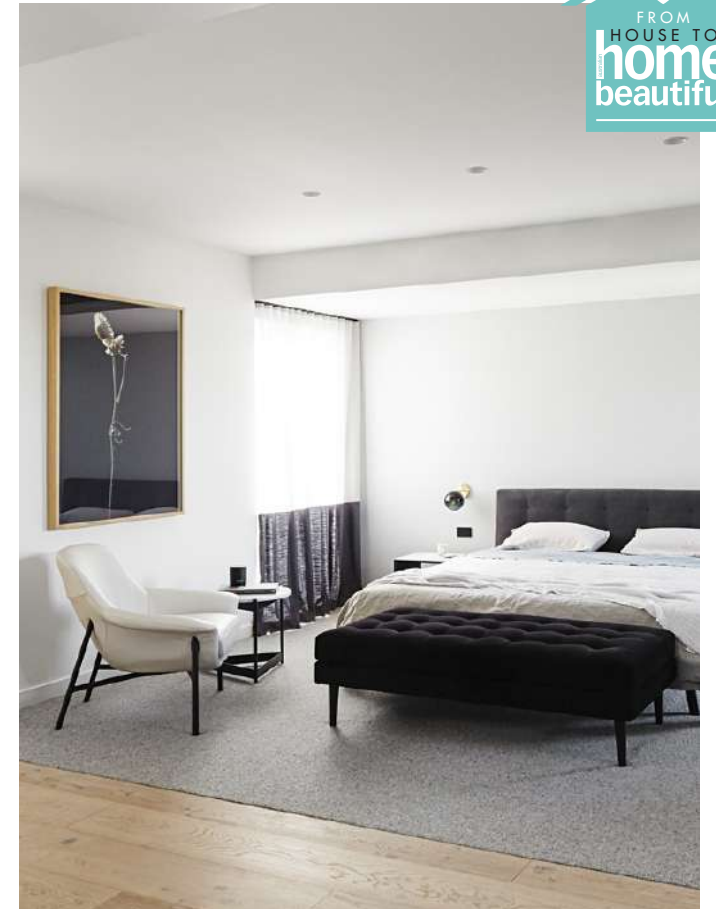


ENSUITE The sumptuous ensuite (above) is a study in elegant finishes, including a vanity top in Pietra Serena Quartz by WK Quantum Quartz, and floors and walls lined in large-format 'Elba' marble tiles from Artedomus – a gorgeous style match to the sleeping zone.

MAIN BEDROOM Extra-wide engineered oak flooring in 'California' from Storey Floors anchors Aimee and Frank's haven (above right), where the 'Encore' bed and 'Seymour' leather armchair – both from King Living – set a tranquil scene. "I wanted our bedroom to feel very calm and quite minimal, so I didn't want to clutter it or introduce lots of colour," says Aimee. Connected to the bedroom is a walk-in robe (below) that has an adjoining five-star nook (right). "I love this beautiful dressing and make-up area next to the wardrobe," says Aimee. "We used an off-cut of the stone from the kitchen island for the vanity top." A Darcy & Duke velvet ottoman brings in a favourite textile. "Velvet always makes a space feel luxurious," she says. 'Far North Gaia' carpet in Palm Cove, from Carpet Court, is a further tactile element. >



PRINT (ABOVE RIGHT) 'DAISY PORTRAIT' BY JAMES GEER





“I TRIED NOT TO PINK-IFY THE *house* TOO MUCH – I JUST ADDED TOUCHES OF *dusty* PINK, WHICH CAN BE VERY SOPHISTICATED” ~ AIMEE

ROSIE'S ROOM “I absolutely adore this feature wallpaper, called ‘Blossoms Mural’ by Anewall,” says Aimee. “I love flowers and, after all, Rosie is called Rosie! The wallpaper is beautiful, but not too little girly, so it will grow with her.” A white four-poster bed from House of Orange, dressed with pink linen by Castle and Things, and a striped Country Road throw, are right at home in this pretty bedroom.

LEO'S ROOM A black-and-white ‘Hurdle’ chair from Dowel Jones, bedlinen from Castle and Things, a minty throw from Eadie Lifestyle and an ‘Ace’ print by James Geer join forces to create a room that Leo loves. “Leo’s very into the idea of sleepovers with his cousins,” explains Aimee. “I was tossing up whether to do a bunk bed, but went with this ‘Gus’ trundle from House Of Orange instead.” Underfoot is Carpet Court’s toasty ‘Far North Gaia’ carpet in Palm Cove. >

OUTDOORS The custom-designed La Paloma banquette from Austral Bricks makes the most of the backyard's leafy setting. "Enjoying the outdoors is such a big focus of this home," says Aimee, who sourced the white outdoor table, sun loungers and chairs from Huset. The outdoor sofa and coffee table are from the King Living King Cove range.

"WE WANTED TO CREATE AN *outdoor* AREA THAT WAS VERY MUCH *connected* TO THE HOUSE" ~ AIMEE

CONTACTS

Building design
Thomas Archer Homes,
(03) 9999 5967,
thomasarcher.com.au

Interior styling
Archer Interiors,
archerinteriors.com.au

ACTUAL PAINT COLOURS MAY VARY ON APPLICATION

1. Outside impact: CSR Hebel PowerPanels were chosen for the home's exterior.
2. A trio of Paris Au Mois D'Aout pendants from Hub.
3. Functionality in the cooking zone is matched with Blum internal fittings.
4. An 'Ace' print by James Geer adds colour to Leo's room.
5. Father and son story time under a vintage poster from 'The Galerie' on a bean chair by Homeday.
6. Jordan's 'Wilfred' armchair and a Michael Bond artwork.
7. An LG washing machine and dryer star in the roomy laundry.

MODERN LOVE

INSIDE STORY
AIMEE & FRANK'S HOME

Who lives here?

Aimee, a stylist with Archer Interiors; her builder husband, Frank, co-owner of Thomas Archer Homes; and their children, Leo, four, and Rosie, two.

What's your favourite room in the home?

Aimee: "The front lounge. I really wanted a room free from kids' toys that felt very special. And I absolutely love every single piece in there."

Advice to others building or renovating?

"A home should be a beautiful example of your personality and style. Stay true to what you love - don't worry about it all 'going together'." **What does Christmas at home mean to you?** "It's just a beautiful time with family. We're all really busy, so I look forward to just stopping and taking a breath - turning off the laptops and phones, and enjoying the family and space. And, of course, the kids will be up at 5am, which always gets the day off to a great start."